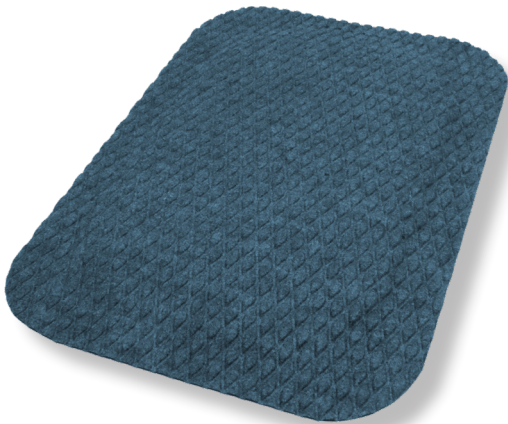


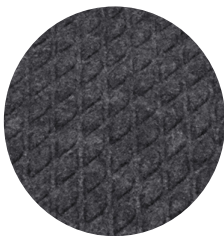
Hog Heaven[®] Fashion Mats

Anti-Fatigue Mats • Indoor

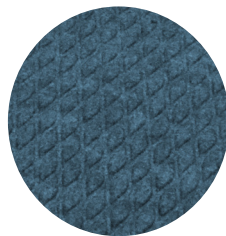
Hog Heaven Fashion mats feature the same excellent anti-fatigue qualities of a standard Hog Heaven mat, but with an attractive, eco-friendly fabric top.



- **Comfortable** – High-density, closed-cell nitrile-blended cushion helps eliminate pressure to the lower back and legs, providing superior comfort
- **Safe** – Certified high-traction by the National Floor Safety Institute (NFSI); edges will not crack or curl and provide a safe transition from floor to mat
- **Durable** – Solution-dyed fabric surface is fade-resistant and molded, not glued, to the nitrile-blended cushion so it will not separate
- **Attractive** – Available in four neutral colors to blend with virtually any décor
- Available in 5/8" or 7/8" thicknesses



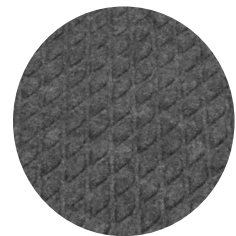
Coal Black



Cobalt Blue



Cocoa Brown

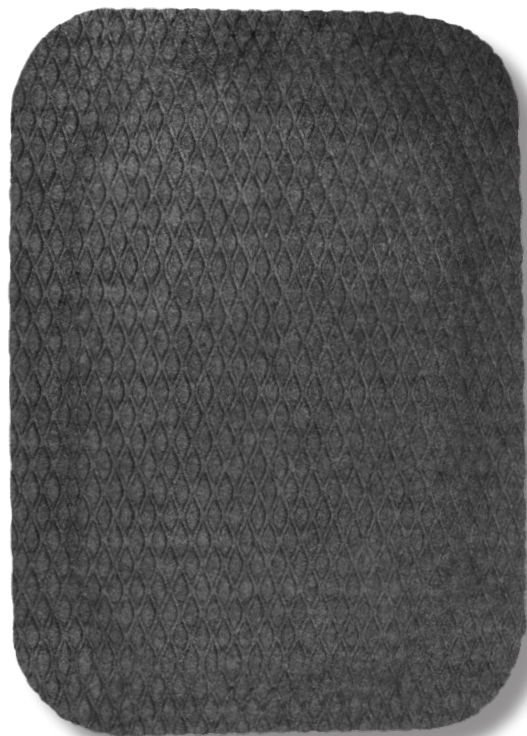


Granite

Colors may vary due to inconsistencies of various display monitors or printers (if you're viewing a printed version of this document). Color images are intended to be used as a guide only.

Hog Heaven® Fashion Mats

Anti-Fatigue Mats • Indoor



Product No. 441 (5/8" thickness)

Size (ft.)	Size (in.)	Product Weight*
2' x 3'	23" x 32"	5.5 lbs.
3' x 5'	32" x 58"	14.2 lbs.
3' x 12'	32" x 142"	35.5 lbs.

*Product Weight based on 48 mil backing

Product No. 442 (7/8" thickness)

Size (ft.)	Size (in.)	Product Weight*
2' x 3'	23" x 32"	6.5 lbs.
3' x 5'	32" x 58"	16 lbs.
3' x 12'	32" x 142"	38.3 lbs.

*Product Weight based on 52 mil backing

Note: Custom sizes are available in 3' (32") widths and whole foot lengths up to 60'.

Mat sizes are approximate as rubber shrinks and expands in conjunction with temperature and time. Tolerable manufacturing size variance is 3-5%.



M + A MATTING

800.241.5549

www.mamattng.com